

PRODUCT LINE:
Interface Converter Module

TO DCE (RS-422)
TO DTE (V.35)

DC to 256 kbps



ICM-3532

FEATURES

- Data Rate: DC to 256 kbps
- Supports asynchronous and synchronous operations.
- All data and clock signals are supported as well as most control signals.

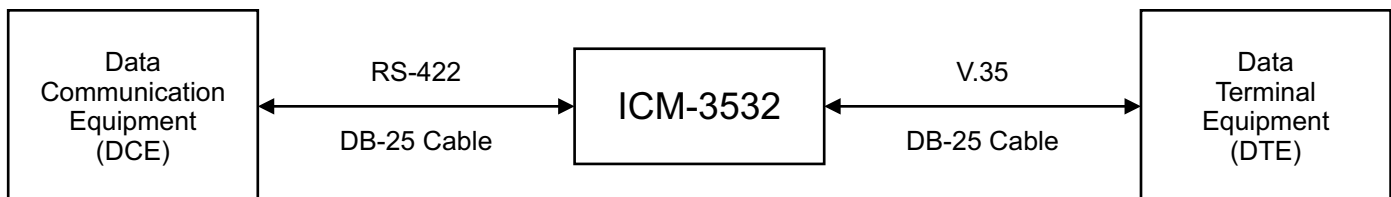
DESCRIPTION

The ICM-3532 provides electrical conversions from RS-422 signals at the Data Communication Equipment (DCE) to V.35 signals at the Data Terminal Equipment (DTE) and vice versa as shown under "[TYPICAL APPLICATION](#)".

The unit is transparent to all handshaking protocols and can accept data, clock, and control signals up to a maximum rate of 256 kbps. FiberPlex recommends "R" units for high security applications because the units have added shielding and filtering to suppress their RFI.

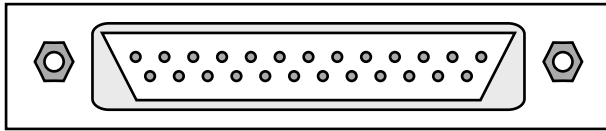
SPECIFICATIONS					
		minimum	typical	maximum	unit
AC Power Requirement	Input Voltage	-	6	-	VAC
	Input Frequency	50	-	60	Hz
	Input Current	-	500	-	mA
DC Power Requirement	Input Voltage	7	9	12	VDC
	Input Current	-	275	-	mA
Data Rate		DC	-	256	kbps
Environmental	Storage Temperature	-40	-	85	°C
	Operating Temperature	0	-	50	°C
Interface Connector	TO DCE (RS-422)	DB-25 Male			
	TO DTE (V.35)	DB-25 Female			
Case Dimensions	Size 3	width	height	length	unit
		1.453	3.188	5.75	inches

TYPICAL APPLICATION



TO DCE

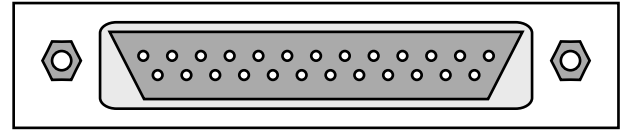
1 2 3 4 5 6 7 8 9 10 11 12 13



14 15 16 17 18 19 20 21 22 23 24 25

TO DTE

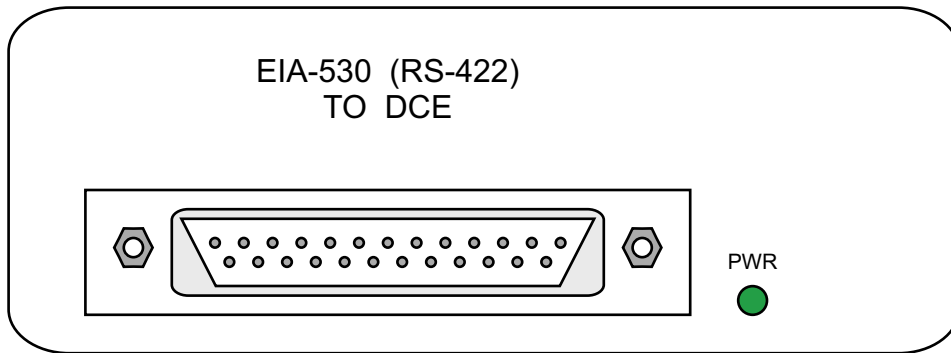
13 12 11 10 9 8 7 6 5 4 3 2 1



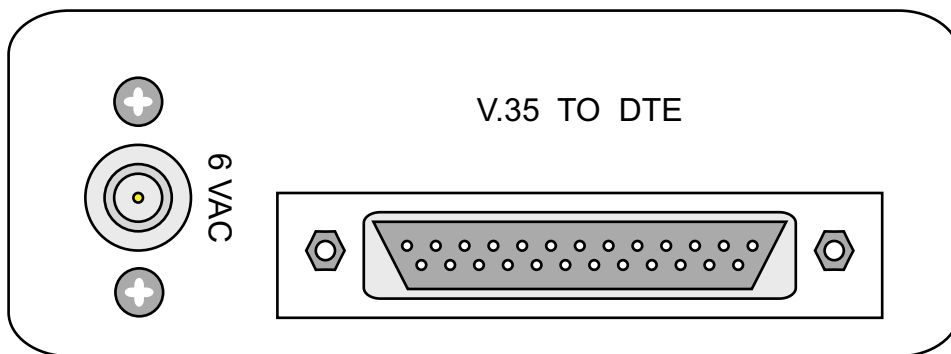
25 24 23 22 21 20 19 18 17 16 15 14

TO DCE (RS-422) DB-25 Male pinout			
Pin	Direction	Label	Description
1			Chassis Ground
2	In	TD	Transmit Data A
14		TD\	
3	Out	RD	Receive Data A
16		RD\	
4	In	RTS	Request To Send A
19		RTS\	
5	Out	CTS	Clear To Send A
13		CTS\	
6	Out	DSR	Data Set Ready A
22		DSR\	
7			Signal Ground
8	Out	CD	Carrier Detect A
10		CD\	
15	Out	ST	Send Timing A
12		ST\	
17	Out	RT	Receive Timing A
9		RT\	
18			
20	In	TR	Terminal Ready A
23		TR\	
21			
24	In	TT	Terminal Timing A
11		TT\	
25			

TO DTE (V.35) DB-25 Female pinout			
Pin	Direction	Label	Description
1			Frame Ground
2	Out	TD	Transmit Data A
14		TD\	
3	In	RD	Receive Data A
16		RD\	
4	Out	RTS	Request To Send
5	In	CTS	Clear To Send
6	In	DSR	Data Set Ready
7			Signal Ground
8	In	CD	Carrier Detect
10			
13			
15	In	ST	Send Timing A
12		ST\	
17	In	RT	Receive Timing A
9		RT\	
18			
19			
20	Out	TR	Terminal Ready
21			
22			
23			
24	Out	TT	Terminal Timing A
11		TT\	
25			



ICM-3532 Front View



ICM-3532 Back View

LED INDICATOR		
Label	Color	Description
PWR	Green	Power supply in ICM unit is operating properly.
	Off	No power from the WTM power supply or open fuse inside the ICM unit. Check that the WTM power supply is operating properly. If the WTM power supply is good, separate the ICM unit from the WTM power supply for 30 seconds and then reattach so that the fuse inside the ICM unit has time to reset. If the PWR led is still off or not constant, replace the ICM unit.

ACCESSORIES	
Model	Description
CMA-3001	Chassis Mount Adapter
RMC-3101	Rack Mount Chassis, 5-1/4" H x 19" W, front access
RMC-3201	Rack Mount Chassis, 5-1/4" H x 19" W, rear access
RMC-4101	Rack Mount Chassis, 5-1/4" H x 19" W, front access with rear exhaust fans and perforated front panel
WMA-3001	Wall Mount Adapter
WTM-3106	Power Supply for ICM-3xxx series

ORDERING INFORMATION
<p>ICM-3532</p> <p>RFI Suppression: Blank = standard unit R = RFI suppressed</p> <p>Available Options: ICM-3532 ICM-3532R</p> <p>• For special applications that require custom units, please call FiberPlex for more information.</p>